

the Poppleton  
centre

# Centrepiece

The Poppleton Centre  
Quarterly Magazine

Issue 90 | Spring Edition | March 2026

## Phase 2 Nearly There



Poppleton Social Facelift



First job - remove the old leaky roof

Those of you who have been to The Centre since New Year will be aware of the transformation of the old conservatory that is taking place.

The Poppleton Social has moved to a temporary home in the Dodsworth and Maypole Rooms and continues to thrive. January's Circus Theme proved to be popular and February's 'Jungleisation' has also been a great success. In March we start to look forward as the coffee shop celebrates the arrival of Spring.

### New Space Open Soon

The refurbishment is going well and the hard-working crew that are making it happen are slightly ahead of schedule to finish the job by the end of March. We'll let you know when the Social will be ready to open in their new home nearer the date.

### Out o' Space Moves On

With the completion of the Conservatory Upgrade at the end of March, Phase 2 of the Out o' Space Project will be almost over - with just a few elements to be finished off. Having achieved this primarily through grant funding and by short term 'borrowing' from trust reserves our fundraising efforts will continue throughout this year to cover all the costs of Phase 2.

Phase 3 is on hold for now. Trustees and the Centre Team will now turn their energies

to undertaking some essential maintenance work that is needed around the site, starting with the much needed work on the sports hall floor.

### Inside Centrepiece

Lots of village news inside plus the background to how your community centre is managed - with an appeal for anyone who would like to consider becoming a Trustee to contact the chairman; an update on the local Biodiversity Group's activities; Parish Council reports and how your sports clubs are achieving great results.



## What's On in Poppleton

Monday 2 March  
**SPRING COMES TO THE SOCIAL**  
Spring theme event starts here

Tuesday 3 March  
**POPPLETON ARTS**  
At The Methodist Hall

Friday 6 March  
**YOUTH CLUB MEETING**  
Term Time Fridays, Methodist Hall

Friday 13 March  
**COMMUNITY FILM NIGHT**  
at The Centre

Sunday 15 March  
**MOTHERS' DAY CELEBRATION**  
at The Poppleton Social, book now

Tuesday 17 March  
**POPPLETON HISTORY SOCIETY**  
at The Methodist Hall

Saturday 21 & 28 March  
**VILLAGE SHOW**  
**TUBER & SEED COLLECTION**  
Outside Methodist Church (see Page 7)

Easter Weekend (tbc)  
**POPPLETON SOCIAL**  
**NEW CAFE OPENS**  
in the refurbished conservatory

Friday 3 April  
**EASTER EGG HUNT**  
At the Centre

Tuesday 14 April  
**POPPLETON ARTS**  
Back home at the Centre

Saturday 25 April  
**POPPLETON COMMUNITY RAILWAY**  
**NURSERY OPEN DAY**  
By Poppleton Station

Monday 25 May  
**CHILDRENS' SPORTS DAY**  
on The Green

# Poppleton Community Trust Meet the Trustees

# and the Centre Team



**Chairman Robin Tomlinson** is a trained Mechanical Engineer previously working in the Power Industry. He and his wife Sue were members of the original working group in 1972 which raised funds to build The Centre, Tennis Courts and Bowling Green. Robin was the Chairman of the Trust when it opened some 26 years ago and fills that role for the sixth time now.



**Allen Jones.** Now retired, Allen worked in the electrical industry for over 40 years, mainly in sales. He has lived in Poppleton for over 30 years and was formerly Chairman for three years.



**Trevor Lawson.** A retired Chartered Surveyor who has lived in Poppleton for over 40 years. Assisted with the building of The Poppleton Centre, the development of the tennis courts and the café/bar. Currently keeping a watching brief on the insurance and utility costs and heavily involved with the current redevelopment of the Centre



**Rachel Roche** joined the Trust in November. She is a solicitor and founder of Roche Legal, a boutique private client law firm based in Poppleton. Rachel lives locally with her dog, Molesey, and two cats, Mini and Mr Perkins. Outside of work, she enjoys walking, yoga, and spending time with friends - and whenever she can, she loves to travel and explore new places.



**Chris Starling** retired in 2019 having been a project analyst at Aviva working around the UK. He became a Centre Trustee in 2023. He and wife Clare relocated to Poppleton in 2007. They enjoy hills, jogging, kayaking, and when he follows cricket she is an amateur jeweller.



**Bob Wood** moved to Poppleton with his wife Marion in 1998 and retired in 2006 having been in Marketing all his working life. He now helps Beth with marketing The Centre and has produced Centrepiece and other Centre promotional material for the past 17 years.



**Treasurer Pam Peacock** and her husband have lived in the village for almost 25 years. Early years she worked in hospitality before retraining in finance, qualified MAAT. Pam enjoys travelling, good food and wine as well as enjoying going to watch rugby union England matches and cycling in the velodrome.



**Mandy Bowers** moved to Poppleton in 2003, is married with a teen and a beautiful black lab. She has been involved in community groups over the years including being a governor at Poppleton scouts and a term as a Trustee, many years ago, at The Centre. Mandy works in HR for a mental health wellbeing charity in Leeds and "Loves village life!"



**Tim Bowers** has lived in the village since 2003; was married at St. Everilda's to his wife Mandy, son attended Ousebank and now at Manor. Tim is a Chartered Civil Engineer delivering sizable Civil Engineering projects for local authorities and Highways England. He enjoys all aspects of the outdoors and village life.



**Michael Crome** has lived in the village since 1984. He has been retired from the Police and CPS since 2016. He is a past President and Captain of Poppleton Bowls Club and coaches/assists with the green's maintenance. Other hobbies include woodturning, DIY and his allotment. He co-ordinates the annual Bonfire Spectacular.



**Andy Dixon** grew up in the Yorkshire Dales and has been living in Poppleton since 2004. He is married to Jane, has two daughters, both of whom went to Poppleton Ousebank and Manor school, and works for Credera, a small management consultancy specialising in technology. Outside of work, he loves cycling, running and hiking.



**Centre Manager, Beth Kirkham** moved to Poppleton when she was 12, left to go to university and returned when she was 22 with husband Simon. After a career with Unilever she became a child-minder while bringing up their son and daughter. Beth has been managing The Centre since 2014.



**Centre Assistant Barry Moss** supports Beth part-time after a 34 year career teaching in London and York.

Born in Stockton-on-Tees, he and his wife Lynn moved to Stamford Bridge, then to Poppleton in 1988. Their three children went to Poppleton Ousebank and Manor Schools.



**Melanie Kaye** helps look after The Centre at weekends. She has lived in Upper Poppleton for nearly 28 years,

was closely involved in setting up PopSoc and is a Non-Executive Director of St Leonard's Hospice and Chair of the Tithe Barn. She spent some 30 years working in different aspects of healthcare management, is married and has two grown up children, who now live in Vancouver and Sheffield.



**Rachael Clark** shares the role of looking after The Centre at weekends. She has always had family in the village. Her

now 13 year old son attended Poppleton under 5s and Poppleton Ousebank nursery. She has had a career in Education for 17 years before making the move to work at the Centre while home educating her son.

## Would You Like to Become a Trustee?

Being a Trustee is a responsible and rewarding role and brings with it the satisfaction of helping to support this valuable village amenity. If you would like to help by joining the Trust you would be very welcome. For details of what that entails chat to any of the Trustees or contact Trust Chairman Robin Tomlinson on [robintom34@gmail.com](mailto:robintom34@gmail.com).



Find out more at [poppletoncentre.org.uk](http://poppletoncentre.org.uk)



Contact Centre Manager 01904 797478 [info@poppletoncentre.org.uk](mailto:info@poppletoncentre.org.uk)

meet | eat | play | relax



# Out o' Space Project Update

## Out o' Space Project Nears Completion

The pictures show the recent changes and improvements which have been happening at the Centre over the last year or so, writes Trust Chair Robin Tomlinson. By the end of March we will be finished and hopefully everything will be back to normal.

These projects have happened because of the hard work of the volunteers who form the Poppleton Community Trust - the Charitable Incorporated Organisation responsible for running the Centre and everything which happens in and around it.

### The Trust

So let me explain a bit about the Trust. We have 11 Volunteer Trustees, all from the locality, and you can see 'mug shots' of everyone on the facing page. Between us we have a range of skills to offer and if you feel like joining us contact the Centre - we would love to hear from you and you will be made very welcome.

The Trust has a Lease from City of York Council who owns all of the land and everything which has been built on it. Bowling green, Tennis Courts, Football field and of course the Centre building. The Trust also owns the land on Millfield Lane (home to Poppleton Football Club) who are entirely self-supported. We get project based grant funding from both Upper and Nether Parish councils every year and this is really important to

us, not only the financial help, but it helps when dealing with grant aiding bodies who are always keen to learn that the local community supports what we do. **However, that is all the financial help that we have. We receive no funding from City of York Council and rely entirely on generating our own finances.**

### Where Does Our Funding Come From?

So how do we pay for the upkeep of the Centre? Well, we have a very enthusiastic and proactive Centre Manager in Beth Kirkham, who I'm sure many of you will know. Beth, and Barry her deputy, are responsible for facilitating all of the activities which take place in the Centre and of course the income which that generates.

Generally speaking that income is sufficient to cover the running costs of the Centre, but it doesn't cover the projects which you can see taking shape. That income we have to generate as a Trust, and we have been very successful in raising the funds necessary to do that work. The two new studios cost £408,000, the refurbishment of the café kitchen £108,000, the improvements to enhance the café, which is currently due to be completed by the end of March at a cost of £144,000 - all were funded by grants. In all, over £600,000 has been raised by Chris Starling and Bob Wood. These funds are not available without a lot of hard work and it has taken over two years to get there - so hats off to those two as well as Beth's Everest

Trekkers and everyone else who has helped with the Out o' Space Project.

### Development Group

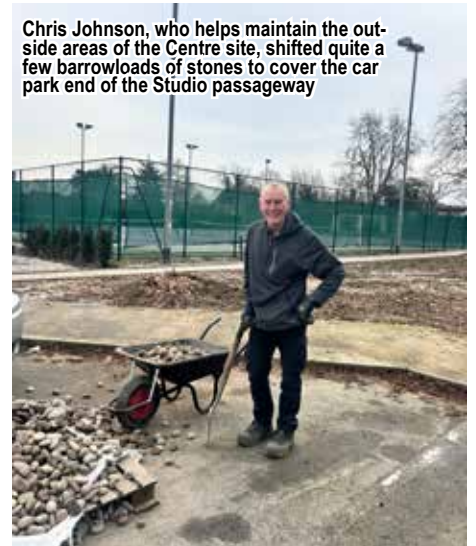
While we are looking at the development of the Centre it is

important that I mention those Trustees who form the 'Development Group'. This is an offshoot from the main Trust who have been overseeing all of this work during the planning and building stages. So, Trevor Lawson, Allen Jones, Bob Wood, Chris Starling, Beth and myself have spent the last three years working with architects, planners, builders and funders to get us to where we are.

Interesting to remember that all of this came out of a village meeting years ago when the village decided to improve the overgrown bit of land given to the village by Peter Banks, of Banks' Music shop in York, by building a bowling green, tennis courts and playground. Following this the committee went on to complete the Centre building some time later.

We have come a long way since then, but not without a lot of time and effort put in by villagers. Please keep up your support.

Chris Johnson, who helps maintain the outside areas of the Centre site, shifted quite a few barrowloads of stones to cover the car park end of the Studio passageway



Making Tax Digital for self-employed and landlords... Demystified

01904 233445 hello@ejpaccounts.co.uk

LEARN MORE

EXPERTISE THAT COUNTS

- Company accounts
- Capital Gains Tax
- Self Assessment
- Corporate Finance Services
- Business Start ups

www.ejpaccounts.co.uk

EJP Accounts CHARTERED ACCOUNTANTS

ICAEW CHARTERED ACCOUNTANTS

Raising the steel lintel to top the new wide sliding window was a nine man job



Find out more at [poppletoncentre.org.uk](http://poppletoncentre.org.uk)



Contact Centre Manager 01904 797478 [info@poppletoncentre.org.uk](mailto:info@poppletoncentre.org.uk)

meet | eat | play | relax

**Poppleton Community  
Railway Nursery News**  
from Richard Scott



Volunteers at the Poppleton Community Railway Nursery are busy with preparations for

**Open Day on Saturday 25 April**

The customary wide range of plants and home made refreshments will be on sale plus books, bric-a-brac and home made crafts. Additionally, work continues with ongoing maintenance of the greenhouses, sheds and the narrow gauge railway. A pdf of all the Open Day dates in 2026 can be downloaded from the nursery's website

[www.poppletonrailwaynursery.co.uk](http://www.poppletonrailwaynursery.co.uk).

New volunteers are always very welcome to help with all aspects of the nursery's activities. Details of how to volunteer are on the website, or come along on any **Monday, Wednesday or Friday between 10am and 3pm** to look around and have a chat.



TUESDAY 14 APRIL

Dan Shrimpton



Joseph Rowntree Theatre  
York's Art Deco Treasure

TUESDAY 2 JUNE

Tony Mosley



Turner & Constable  
Rivals or Colleagues?

TUESDAY 5 MAY

Stan Young



Noel Terry  
Life, Letters and Legacy

**Poppleton Arts  
Society**

**7:30 pm**

At The Poppleton Centre

Visitors welcome, £5 at the door  
For more information please contact  
[poppletonarts@gmail.com](mailto:poppletonarts@gmail.com)



**NEED AN ELECTRICIAN.....  
THEN REACH OUT TO MAD ABOUT ELECTRICS**

We are your local NIC EIC Approved and MCS certified electrician and can help you with all your electrical needs including:

- Re-wires
- Extensions
- Outside Lighting
- Replacement lights
- Electric Vehicle Chargers
- Solar Panel Designs
- Home Battery Storage
- General maintenance & repairs

EMAIL: [INFO@MADABOUTELECTRICS.COM](mailto:INFO@MADABOUTELECTRICS.COM) TEL: 01904 787983



the **Poppleton**  
centre

Find out more at [poppletoncentre.org.uk](http://poppletoncentre.org.uk)



Contact Centre Manager 01904 797478 [info@poppletoncentre.org.uk](mailto:info@poppletoncentre.org.uk)

meet | eat | play | relax

# News from Upper Poppleton Parish Council

From Neil Lawrence

## Precept Reduction

The Parish Council meeting in January is of particular importance because the budget for the following financial year is set and as a consequence the precept, which villagers pay every year as a small part of their rates bill, is established.

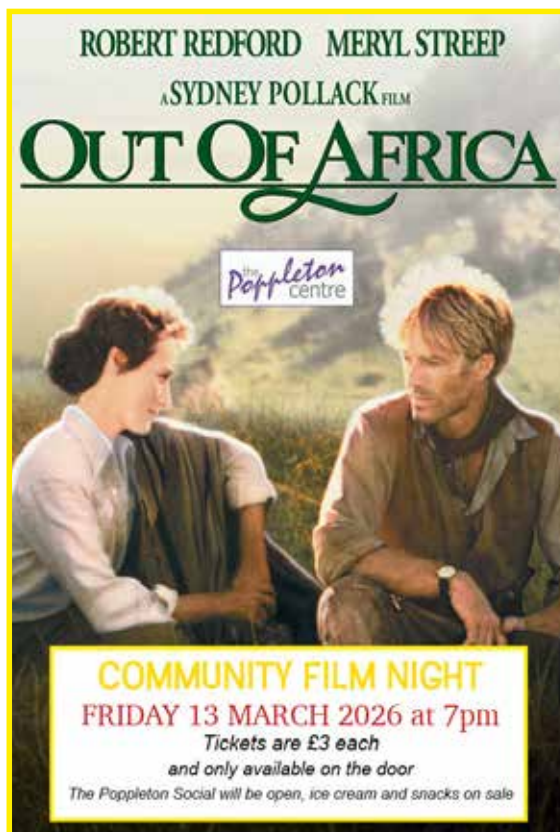
In addition, and possibly the most important topic, are the decisions on the donations to local good and worthy causes. Amongst others, these include All Saints Church; Poppleton Community Trust; Poppleton Under-Fives and several more. The Parish Council approved £15,900 in donations for 2026. This is over £1,500 more than was given in 2025. We also agreed a reduction in the precept for the coming year. It was raised last year to cover the anticipated cost of re-surfacing the car park. This was a one-off increase which is no longer required. So, some financial good news in these difficult economic times.

## Council Merger Petition

I have little to report on the quest for one Parish Council. Signatures for the Community Governance Review petition are being slowly gathered. The petition, and the reasons for it, is available for signing at the Poppleton Centre. Look for the notice on the Reception desk. Please add your name to the list then we can hopefully make some progress.

## Biodiversity Group

Below you will see an update from the Poppleton Biodiversity Group. This group is moving along very well with increasing interest from villagers. Their budget for 2026 was also approved by both Upper and Nether Parish Councils in January. So expect good things in 2026.



## Poppleton Biodiversity Group - Activity Update

Poppleton Biodiversity Group goes forward into 2026, building on our work in 2025. Thank you to everyone who got involved to help, there are lots more opportunities coming up this year!

The wildflower bulbs we planted last autumn in Warren Lea and on the triangle at the end of Ouse Moor Lane are coming through, promising to provide early nectar for insects and helping us into spring.

### Tansy Beetle

A priority this year is to support our local Tansy beetle population - an incredibly scarce species found only along the riverside around York, and two small areas in the Cambridgeshire/Norfolk Fens. We have our very own Tansy beetles right here in Poppleton but they need our help. Controlling Himalayan balsam and protecting the Tansy plants that the beetles feed on is key to this. We are targeting known areas where the Tansy beetle is holding on and replacing the invasive

Himalayan balsam with new Tansy seedlings to help to maintain and extend this beautiful beetle's habitat.



Tansy Beetle

enhance the Green by providing a more diverse habitat for butterflies, bees and other insects and will also be attractive and interesting for villagers. When a firm proposal is available, it will be discussed with neighbouring residents and then presented to the Parish Council for approval.

### Come and Join Us

We hope 2026 will see increased numbers of volunteers joining in our efforts to make even more opportunities for nature in our lovely green village. Please join in so we make the most impact - look out for our posters later in the year, or join our new WhatsApp group.

Contact us on [poppbiodiv@gmail.com](mailto:poppbiodiv@gmail.com)

### Chantry Green Plans

A plan is being developed for a wildflower meadow on a part of Chantry Green. This will

## More Bio News

We have just started using a 'pop-up' stall in the village, writes *Chris Stirling*, that sells eco cleaning products. It's run by John Middleton and Marian Beck who source their products from a company called Bio-D in Hull. They have certification as a B-Corp (which means high social and environmental standards) and they're an 'Ethical Best Buy'. John and Marion set up their stall in the Methodist Church on the first Tuesday of each month, 10am-12 noon. They currently have eleven cleaning products - washing-up liquid, laundry liquid, dishwasher tablets, soap, nappy fresh, unbleached loo roll, etc. and sell it at cost price, i.e. they make nothing from it. It's an eco/environmental passion of theirs and if you're interested, maybe give them a try.



Find out more at [poppletoncentre.org.uk](http://poppletoncentre.org.uk)



Contact Centre Manager 01904 797478 [info@poppletoncentre.org.uk](mailto:info@poppletoncentre.org.uk)

meet | eat | play | relax

**HUDSON MOODY**

## A HELPING HAND WITH YOUR NEXT HOME MOVE

We're the award winning independent estate agents you can trust. With a team of accredited local experts, extensive online marketing tools and unrivalled personal service, we'll help you every step of the way.

**VISIT OUR WEBSITE TODAY FOR A FREE INSTANT ONLINE VALUATION**



The Green, Poppleton T: 01904 789999 | 16 York Street, Dunnington T: 01904 489906 | 58 Micklegate, York T: 01904 650650

[www.hudson-moody.co.uk](http://www.hudson-moody.co.uk)  
E: [property@hudson-moody.com](mailto:property@hudson-moody.com)



## Do you need help with your financial future?

Here at PenLife, we specialise in helping people who:

- Want help planning retirement
- Are beginning or are already in retirement, and need guidance
- Are worried about Inheritance Tax
- Need support with their existing investments
- Own a business and would like advice on their finances
- Have a defined benefit pension they're unsure what to do with
- Are facing a lifestyle change because their circumstances have altered
- Want to ensure their family is properly protected should the worst happen

To explore how PenLife can help you with your financial future, call us on 01904 661140, email [enquiries@pen-life.co.uk](mailto:enquiries@pen-life.co.uk) or scan the QR code. The initial meeting is held at our expense and there's absolutely no pressure to take things further, so there's nothing to lose.



Scan me!





Chartered

Registered in England No. 2390548. PenLife Associates Ltd is authorised and regulated by the Financial Conduct Authority. Authorisation Number 212972. The value of your investments can go down as well as up, so you could get back less than you invested. The FCA does not regulate estate planning.

**Vibrant Transformations** Kitchen and Bedroom Transformation Specialists

Over 30 years' experience in the furniture industry, quality assured

Bespoke replacement kitchen and wardrobe doors  
Bespoke sliding wardrobes and accessories  
Various handyman jobs – no job too small  
Flat pack furniture assembly

Why rip out your kitchen when you can get us to design, supply and fit quality new doors & accessories

Call Jason on 0737 831 0970  
[www.VibrantTransformations.co.uk](http://www.VibrantTransformations.co.uk)

the **Poppleton** centre

Find out more at [poppletoncentre.org.uk](http://poppletoncentre.org.uk)



Contact Centre Manager 01904 797478 [info@poppletoncentre.org.uk](mailto:info@poppletoncentre.org.uk)

meet | eat | play | relax

# News from Nether Poppleton Parish Council

From Richard Harper

## No Go For Caravans

January is always a busy time for the Parish Council. You may have noticed that from time to time there have been caravans and mobile homes parked in the car park area near the river. This is because one website said that it was a good place to park. In order to stop this the Parish Council asked for this site to be removed and subsequently the owners of the website have done this.

## Grant Funding

The major task for the January meeting was to set the budget for the year. This year we had representations from many organisations asking for various amounts of money so that they can provide for the needs of the community. This year we considered requests from:-

The Millennium Green  
 Poppleton Children's Sports Day  
 The Community Railway Nursery  
 The Community Trust

The Luncheon Club The Under Fives  
 The Youth Club St Everilda's Church.

Everyone that came to make representation gave a good account of why our support was necessary and we felt that we should be able to offer the funds that have been requested. The funds should be available at the start of the financial year in April.

## Further Projects

We are currently getting quotes to enable us to fill in some of the holes in the parking area outside St Everilda's. We are also re-applying to get the Lord Nelson as a Community Asset. This is even more important now as the Pub is very busy.

A. Burn Landscape Gardener

Garden Maintenance  
 Sheds & Pergolas  
 Fences  
 Patios  
 All Aspects of Landscaping  
 Jet Washing

07922 042 742

Trek Kilimanjaro  
 3 - 12 October 2026

OUT OF SPACE PROJECT

There's still chance to sign up for the latest adventure with Beth and the team. This October, 3rd-12th, they are heading out to climb Kilimanjaro. For more information or to sign up contact Beth at [info@poppletoncentre.org.uk](mailto:info@poppletoncentre.org.uk)

Town Planning Applications  
 Building Regulations Applications  
 Heritage and Conservation  
 Development Feasibility  
 Commercial Architecture  
 And More...

For your requirements:  
[project@architectsyork.com](mailto:project@architectsyork.com)  
[www.architectsyork.com](http://www.architectsyork.com)  
 01904788098

YORK DESIGN AWARD 2023

Finning ASSOCIATES  
 AWARD WINNING ARCHITECTS

Village Show  
 Bucket List

David Johnson, Village Show organiser, tells us that this year the competition is changing to **Spud in a Bucket and Beetroot in a Bucket**

The free tubers and seeds will be available on **21st March at Allerton Drive shops and 28th March outside the Methodist Church from 9.30 to 11.00**

Programmes and raffle tickets will be available  
 Top raffle prize of two adult flights with Jet2.

The Poppleton Village Show this year is on **Saturday 15 August**

# INTRODUCING JAECCO.

JAECCO has arrived! With bold design, advanced technology, and unmatched versatility, the new JAECCO 7 is built to take you anywhere in style and comfort. Explore the range NOW at Batchelors in Ripon, York and Malton.



JAECCO 7 DELUXE • 1.6L Turbo Petrol • 7-Speed Automatic



JAECCO 7 LUXURY 4 WHEEL-DRIVE  
• 1.6L Turbo Petrol • 7-Speed Automatic  
• 4-Wheel Drive



JAECCO 7 LUXURY PHEV  
• 1.5L Plug-in Hybrid • 2-Wheel Drive

Scan the QR code to view our current offers



Experience the comfort, performance, and adventure-ready spirit of the JAECCO 7 at Batchelors in Ripon, York and Malton to test drive your new JAECCO 7 today.



**BACHELORS RIPON JAECCO**  
Dallamires Lane, Ripon, North Yorkshire. HG4 1TT  
Tel: 01765 690590

**BACHELORS YORK JAECCO**  
Hudson Court, Great North Way, York. YO26 6RN  
Tel: 01904 520820

**BACHELORS MALTON JAECCO**  
Northside Business Park, York Road, Malton. YO17 6TB  
Tel: 01653 916580

[www.batchelorsmotorgroup.co.uk/jaecco](http://www.batchelorsmotorgroup.co.uk/jaecco)

Batchelors - For all your

# Sales Servicing & Parts

**Special MOT rate only £39!\***



# Sensational Suzuki Offers



Scan here for details



**Hudson Court,**  
Great North Way, Poppleton,  
York YO26 6RN



**Ings Lane,**  
Great North Way, Poppleton,  
York YO26 6RA

**01904 520 820** [www.batchelorsmotorgroup.co.uk](http://www.batchelorsmotorgroup.co.uk)

\*Enjoy our £39 MOT welcome offer on your first booking (class 4 vehicles only). Re-test fee may apply if a retest is required. Offer Valid until 30th June 2026.



Find out more at [poppletoncentre.org.uk](http://poppletoncentre.org.uk)



Contact Centre Manager 01904 797478 [info@poppletoncentre.org.uk](mailto:info@poppletoncentre.org.uk)

meet | eat | play | relax

## An Office Base Just 5 Minutes from Home

Our space is *your* space, with *free parking*  
*'Virtual' offices* perfect for smaller businesses

*Meeting room* for up to 10 people

*Fully trained staff* act as *your* staff

*Hot desks* when working from home isn't viable

**Never miss potential business**



**WESTMINSTER**  
BUSINESS CENTRE

OFFICES | MEETING ROOMS | HOT DESKS

Great North Way, Nether Poppleton

For details contact Sandra Tearney

E: [enq@westminsterbusinesscentre.co.uk](mailto:enq@westminsterbusinesscentre.co.uk)

T: 01904 520100 M: 07979 936946

## We've room for a few more patients...



## ...do join us.

**For all new patients the examination appointment is £87 which includes X-rays**

Poppleton Dental Practice | The Green  
Upper Poppleton | York YO26 6DD

T: 01904 781987

E: [reception@poppletondentalpractice.co.uk](mailto:reception@poppletondentalpractice.co.uk)

W: [www.poppletondentalpractice.co.uk](http://www.poppletondentalpractice.co.uk)



Rebecca Bayne BDS GDC no: 79380  
Tarijinder Gill BchD PG Dip (Imp. Dent) GDC no 83906  
Sarah Miller BDS GDC no: 74568  
We are a fully private practice

## Poppleton Social Have a Spring in Their Step



In January the Poppleton Social's temporary new home in the Dodsworth and Maypole Rooms turned into the Big Top as they embraced a circus theme; in February they went on safari into the jungle - now that March is upon us the Social embraces a Spring theme. You won't find manager Simon Moss in his rabbit outfit (fortunately) but look out for themed decorations and activities throughout the month.

### Easter Egg Hunt

We'll be having our annual Easter Egg Hunt on 6th April so put the date in your diary and get ready to pop into The Social as well as scouring the site for Easter Eggs.

### Keep Up To Date

Don't miss out on what's going on at the Centre - sign up for The Poppleton Centre ENews at [poppletoncentre.org.uk](http://poppletoncentre.org.uk) and follow The Poppleton Social on social media.



Poppleton Social went on Safari in February

the  
**Poppleton**  
centre

Find out more at [poppletoncentre.org.uk](http://poppletoncentre.org.uk)



Contact Centre Manager 01904 797478 [info@poppletoncentre.org.uk](mailto:info@poppletoncentre.org.uk)

meet | eat | play | relax

• BESPOKE JOINERY  
 • BUILDING ALTERATIONS  
 • RENOVATIONS  
 • GARAGE CONVERSIONS  
 • KITCHEN INSTALLATIONS  
 • KITCHEN SUPPLIED & FITTED

**CarlWinn**  
Building & Joinery

Call on: **07772 853299**

FOLLOW US ONLINE SEE OUR REVIEWS  
 f t i n i Checkatrade.com

FEDERATION OF MASTER BUILDERS  
 In Partnership With... **KITCHEN FITTERS**  
 WWW.CARLWINNJOINERY.CO.UK

**Women's Health Awards 2025 Winner**

**Solution-Focused Hypnotherapist of the Year**

Feeling overwhelmed, anxious or burned out?  
 I help women and men calm their minds and **regain** control through my proven **Mind Reset Method**.

**Kirsty Thompson**

ASPIRE WELLNESS  
 Solution-Focused Hypnotherapy & Coaching

✦ Free Initial Consultation  
 ✦ In-person & online sessions  
 ☎ 01904 793288  
 ✉ aspirewellnessyork.co.uk

Clear legal guidance today for *peace of mind* tomorrow.

**POPPLETON YOUTH CLUB**

**Well Supported**

The club, which meets on Friday nights in school term time at the Methodist Church old Hall on the Green, continues to be well supported with around 30 young people attending every week.

On 28th. November many club members had an enjoyable evening skating at the York Christmas Ice Rink.

**Could you help?**

The club is looking for new volunteers to assist on Friday nights. Anyone over 18 is eligible to apply and it is a good way for students or young people interested in a career in teaching or working with children to gain experience.

**New Top Team**

At the Annual General Meeting in September Tony Pink was nominated to take over as Chair at the year end from Jerry Holland who had held the role for over 15 years. Anne Johnson stood down as secretary. Tom Jenkins will take over as secretary on a temporary basis.

**Please Join Us**

The club is looking for new members to join the management committee to oversee the running of the club. This does not involve actually working in the club. Parents of club members would be particularly welcome.

**If you are interested please contact Tony Pink at [tony@tonyoppleton.com](mailto:tony@tonyoppleton.com)**

**Poppleton Legal Clinic**

**Free initial appointment with our friendly solicitors.**

Our Legal Clinics cover all areas of Private Client law, including:

- Wills and Probate
- Trusts and Tax
- Powers of Attorney
- International Probate
- Missing Persons Law
- Document Services
- Managing Affairs & Court of Protection

In your appointment, we will:

- Understand your situation
- Recommend the best next steps
- Explain how we may be able to help, including any costs if proceeding

**Dodsworth Room, The Poppleton Centre**

Third Thursday of the month, 1:30pm to 4:30pm

**Roche Legal®**

Specialists in Wills, Probate and Private Client Matters

01904 866139 | [hello@rochelegal.co.uk](mailto:hello@rochelegal.co.uk) | [rochelegal.co.uk](http://rochelegal.co.uk)

Find out more at [poppletoncentre.org.uk](http://poppletoncentre.org.uk)

Contact Centre Manager 01904 797478 [info@poppletoncentre.org.uk](mailto:info@poppletoncentre.org.uk) **meet | eat | play | relax**



RIBA   
Chartered Practice

Paul Butler  
Architects Ltd



Unit 1 Westfield House | Millfield Lane | Nether Poppleton | York YO26 6GA

T: (01904) 790244 | E: paul@pb-architects.co.uk |

## Village Voice

from a car lover



### Potholes Are Driving Me Potty

Have you seen the state of Hodgson Lane?  
I'd rather not drive there again.  
Along beside the village green  
The potholes there are quite obscene.  
And that is not the only road  
That gives your springs an overload.  
With shoulders aching from the tension  
Worried for my car's suspension -  
So I propose a village sign  
To obviate a damaged spine -  
*Welcome to Potholeton*, and there  
To also suggest - *Drive With Care*

## ADULT DANCE LESSONS WITH WHITE DIAMOND DANCE STUDIOS IN POPPLETON

### Latin & Ballroom

- Learn to move confidently on the dance floor with a partner.
- Beginner, intermediate and advanced lessons available.

**TUESDAYS 6.30-7.30PM**

At Poppleton Methodist Church,  
The Green, YO26 6DP.



### Ballroom Babes

- Over 55yrs. Come and dance all your favourite dances from Strictly and learn them without a partner.
- Great for fitness great for the mind and great FUN!!

**MONDAYS 9.15-10.15AM**

At Poppleton Centre, Main Street, YO26 6JT.

**CLASSES ARE £9 - THE FIRST LESSON IS FREE!**

Call **07977 042970**  
Email [james@whitediamonddancestudios.co.uk](mailto:james@whitediamonddancestudios.co.uk)  
Visit [www.whitediamonddancestudios.co.uk](http://www.whitediamonddancestudios.co.uk)



## Helping you age well in your own home.



Radfield  
Home Care

Call to speak to the team

**01904 395 138**



[york@radfieldhomecare.co.uk](mailto:york@radfieldhomecare.co.uk)  
[www.radfieldhomecare.co.uk/york](http://www.radfieldhomecare.co.uk/york)



Find out more at [poppletoncentre.org.uk](http://poppletoncentre.org.uk)



Contact Centre Manager 01904 797478 [info@poppletoncentre.org.uk](mailto:info@poppletoncentre.org.uk)

meet | eat | play | relax

**Please support our advertisers  
and don't forget to tell them you saw them  
here in Centrepiece  
Thank you**

**Poppleton Library**

A brilliant range of books for all ages  
We stock Large Print and Talking Books  
Access to Ancestry and Find My Past websites  
Update your York Card or you can do this on-line as a digital card at [card.exploreYork.org.uk](http://card.exploreYork.org.uk)

Monthly Reading Group and a Weekly story time – contact branch for details

Under 5s Story Time - just drop in  
Every Wednesday 2.30-3.00pm

Lego Play Every Saturday 10.30 – 11.30

E books and E Audio books are available via the Libby app and Borrow Box

For information and opening times please see our website [exploreYork.org.uk](http://exploreYork.org.uk)

We value your support and look forward to seeing you

[www.exploreYork.org.uk](http://www.exploreYork.org.uk)  
  
**explore**  
 Libraries and Archives

**RYLAND HORTICULTURE LTD**

**Aboricultural and Landscape Contractors**

- Commercial and domestic landscapers
- Specialists in high quality garden improvement, alteration and design
- Full design service from concept to construction
- Approved contractors
- Full insurance cover
- All tree works and consultancy
- All works guaranteed

**Rylands • 159 Long Ridge Lane  
Upper Poppleton • York • YO26 6HA  
Tel: (01904) 799032  
[www.rylandhorticulture.co.uk](http://www.rylandhorticulture.co.uk)**



**GET YOUR  
FREE  
CONSULTATION**

**NETHER POPPLETON'S AWARD WINNING  
PERSONAL TRAINING**

PRIVATE STUDIO  
NETHER POPPLETON BUSINESS PARK

07729 590641  
[WWW.DEFINITIONBODYCOACHING.CO.UK](http://WWW.DEFINITIONBODYCOACHING.CO.UK)  
JUSTIN@DEFINITIONBODYCOACHING.CO.UK



Find out more at [poppletoncentre.org.uk](http://poppletoncentre.org.uk)



Contact Centre Manager 01904 797478 [info@poppletoncentre.org.uk](mailto:info@poppletoncentre.org.uk)

meet | eat | play | relax

# Poppleton History Society

News from Julian Crabb

## Ordinary Meeting

16 December 2025

### York in Close Up

By Catherine Sotheran

Catherine was York born and has always lived there. Since retiring from work as a Seamstress and after joining the Facebook group 'York Past and Present' she explored local history and took many photographs around York and the Minster, focusing on small details on buildings that often go unnoticed.

How many have noticed the range of interesting objects, plaques, statues and heraldry around York? A favourite topic of Catherine was the range of doorways and windows. Apart from common sash windows there are round headed, ogee and triangular windows. There is even a coloured glass picture of a Japanese lady at the back of a terraced house near the King's Staithe.

York has numerous sundials and public clocks, but few are working. There is a 'mass' dial on the south choir aisle of York Minster which is rarely seen. Several gargoyles on the Minster are invisible to most, but Catherine has succeeded.

Houses display special features like rainwater hoppers. The earliest dates from 1590, in an alley off Stonegate. Some companies like Northeastern Railway had their own designs, dated 1904 for their headquarters, at what is now The Grand Hotel. Some properties still carry fire insurance plaques from lost firms like County (1807), Sun Fire Office (1710) and Yorkshire (Life 1824).

The Cat Trail is famous in York and statues of cats on buildings may date from medieval times to scare away rats. The oldest date from 1920 when two were placed on a building in Low Ousegate. Others copied the idea and in 1979 local architect, the late Tom Adams, drew black cats as his signature and placed them on buildings he designed.

A quick quiz at the end stumped some in the audience as to their location.

## Ordinary Meeting

20 January 2026

### Arthur Walker's Great war

By Chris Cade

Chris Cade returned for his third visit to the Society. As a reminder, he trained as a teacher at St. John's College, York and in Educational Theatre at Bretton Hall, Wakefield. He was a

founder member of Platform 4 Theatre at the National Railway Museum and works freelance in schools, museums and community venues across Yorkshire and beyond.

Chris opened by playing, "Til the Boys Come Home" on his harmonica and introduced Arthur Walker as a sixteen-year-old farm hand from Crambe, skilled in horse handling. He enlisted with the Wolds Wagoners in August 1914 and was then transferred to the 15th Battalion, the West Yorkshire Regiment. Equipped with a Lee Enfield rifle with bayonet he was sent to the Somme.

Periodically to the whistle and "Over the top Tommy" a charge across no-man's land incurred a casualty rate of one in six. Those who survived had to cope with "Trench Fever" and "Trench Foot". A welcome parcel to Private Walker 42183 from his mother contained 'louse powder'. Arthur and many others were forced to surrender to the Germans, 27 March 1918 and taken in cattle trucks to a Prisoner of War Camp. There they were put to work existing on atrocious food of varieties of cabbage. Arthur's mother was notified of his status, but he remained prisoner until peace was declared. On leaving with others they were lost until found by a Red Cross unit.

Returning home Arthur found many jobs taken over by women but he found work at Grimethorpe Colliery before returning to farming at Barton le Willows. He married his new love at Leeds Registry Office and the couple moved to Foston in 1938. Ironically their daughter Elsie was born the day before war broke out again in 1939. Arthur remained one of the "Leeds Pals", all who had served in the 15th Battalion of the West Yorkshire Regiment. In the second war he served in the Home Guard.

Chris Cade returned for his third visit to the Society. As a reminder, he trained as a teacher at St. John's College, York and in Educational Theatre at Bretton Hall, Wakefield. He was a



Chris Cade as Arthur Walker



A group of Wolds Wagoners

## Next Meetings

Tuesday 17 March

7.30pm

The History of Mental Health Care  
in York over 250 Years

by Robert Adams



## Poppleton Tithe Barn

Open for Bookings

Exhibitions, Craft Fairs, Meetings, Social Gatherings, Dinners, Christenings, Wedding Breakfasts  
Private Garden and Kitchen facilities  
See our website - poppletontithebarn.co.uk



# RICHARD DRISCOLL

## PAINTER AND DECORATOR

Call for a quote on  
**01904 264488**  
**07961 052679**

richarddriscollrichard@aol.com



PAVING - PATIOS  
DRIVEWAYS - FENCING  
GRAVELLING - DECKING  
GATES - PERGOLAS  
PONDS



Please contact Nick Reynolds to discuss your requirements

t: 01904 785008

m: 07714 726939

www.poppleton-landscapes.co.uk

the Poppleton centre

Find out more at [poppletoncentre.org.uk](http://poppletoncentre.org.uk)



Contact Centre Manager 01904 797478 [info@poppletoncentre.org.uk](mailto:info@poppletoncentre.org.uk)

meet | eat | play | relax



# News from Poppleton Sports Clubs

## Poppleton Lawn Tennis Club News from Hilary Spencer

### New Pavilion

It's been a very cold and frosty start to 2026. Members have generally been able to play on all courts but the artificial clay has been good to play on whatever the weather so far.

The new Padel court has been very successful. Regular bookings from both members and non members have made a very promising start for the Club. Members receive discounted booking rates. Rackets and balls can also be hired for play.

### Membership Open

Membership for the 2026-2027 season is open and new and existing members are all very welcome. Please see the PLTC website for further information and details. Our comprehensive range of adult and junior coaching programmes is delivered by a team of LTA qualified coaches to give all players opportunities to improve their tennis and gain greater enjoyment from the game. Adult group coaching is on Saturday mornings 10-11am, ladies' social tennis on Monday afternoons and men's social tennis on Sunday mornings 10-12pm.

Members are already preparing for the start of the new match season with Ladies', Men's and Mixed Doubles being played in local and county leagues. Please see the PLTC website for any further information and contact details.

[www.clubspark.lta.org.uk/  
PoppletonLawnTennisClub](http://www.clubspark.lta.org.uk/PoppletonLawnTennisClub)

Twitter [@PoppletonTennis](https://twitter.com/PoppletonTennis)  
Facebook [.com/PoppletonTennisClub](https://www.facebook.com/PoppletonTennisClub)

## Poppleton Football Club

### Seniors News from Alex Janes

#### Back on the Pitch

Poppleton 1st team are on course to complete their highest ever finish and points total in the York Premier Division. The team are currently on a 7-game unbeaten run and sit 4th in the table. With nine games remaining, they will be looking to consolidate what has been an excellent season up until now. Individually, goal-machine Josh Winn currently sits top of the goalscoring charts for the division with 13 goals in 14 games.

The 2nd team also continue to show vast improvements as they sit a respectable 6th position in Reserve 'A'. Another stop-start fixture list means plenty of games to get their teeth into as they head into the back end of the season. For the 2nd team, hot-shot Joe Fletcher currently has 10 league goals in 9 games.

The club are also proud to announce that they recently had two of their players selected for the league representative side in Charlie Dixon and Tom Palmer. Charlie and Tom will represent the York Football League as they play the Cheshire equivalent in the National FA Inter-League Cup.

As always, we say thanks to our spectators and sponsors for their continued support of the football club, as well as Chris and Maria at the White Horse Pub for their fantastic hospitality after matches.

Further information from  
**Alex Janes**  
[alex.janes1@hotmail.com](mailto:alex.janes1@hotmail.com)

### Juniors News from Rich Fox

#### Pitch Perfect

Like everyone, we'll be glad to see the back of this very wet winter - the pitches have taken a battering, and Jim and his team have worked tirelessly to keep them in great nick, allowing training to continue and as many matches as possible to take place.

#### 14th Annual Beer & Music Festival Sponsorship

**Friday/Saturday 12/13 June 2026**

We've been planning this year's event for the last couple of months, and now is the time to get in touch if you'd like to support us.

The festival wouldn't be possible without the generous support of our sponsors. We have a range of great value sponsorship packages - from headline event sponsorship to supporting the music tent, tokens, festival glasses or a barrel or two of top quality beer or cider.

Every package comes with excellent benefits, including tickets and tokens, the chance to entertain colleagues or friends, an advert to showcase your brand to a loyal, engaged audience of thousands, and the knowledge that you're supporting a much-loved local event.

#### Volunteering

Our volunteers are also vital to our success. We've already had lots come forward again for this year as it's such a rewarding and fun thing to do, but we're always on the look out for new faces.

Please text Bel on 07982 243021 or Rich on 07801 251595 for more information about sponsorship or volunteering.

More information on our website  
[www.poppletonjfc.btck.co.uk](http://www.poppletonjfc.btck.co.uk)

## Poppleton Bowls Club News from Colin Robinson

### Still Busy During Winter

Although the club has been in its winter mode, i.e. bowling finished in mid September 2025 and won't resume until around mid April this year, there has been plenty going on behind the scenes.

Work never really finishes on the green and the club's dedicated Green Team has been busy all autumn and into the winter keeping the green in tip top condition as well as all the many maintenance tasks that never end. The green certainly looks in great condition thanks to them.

With the help of the Trust and its

Chairman Robin Tomlinson Poppleton Bowls Club is looking at the possibility of extending and improving the club house. It won't be easy and nothing is likely to happen in a hurry but at least the ball is rolling.

Throughout the down period Alan Taylor keeps us all together and amused with his monthly quizzes which take place in the clubhouse always on a Friday evening. They are good fun and a really cracking social occasion.

Very shortly the membership forms for the season ahead will be going out to members. At the moment PBC has a healthy membership and we are already assured of at least two more members. We are, of course, always keen to welcome new

members male and female. We are a very friendly and inclusive club. Every Tuesday throughout the season our coaches are available to give instruction to prospective members. Just turn up and have a go!

For more information contact  
**Colin Robinson, Secretary**  
01904 783281 or 07717 941260  
[colinanddee.robinson@btopenworld.com](mailto:colinanddee.robinson@btopenworld.com)



Find out more at [poppletoncentre.org.uk](http://poppletoncentre.org.uk)



Contact Centre Manager 01904 797478 [info@poppletoncentre.org.uk](mailto:info@poppletoncentre.org.uk)

meet | eat | play | relax

Almost every day of every week throughout the year a host of activities are going on at The Poppleton Centre - for all age groups and abilities. If you'd like to join in, contact details for each activity are detailed below. If you'd like to organise something new, contact Beth Kirkham at [info@poppletoncentre.org.uk](mailto:info@poppletoncentre.org.uk) or 01904 797478.

## Put a spring in your step at



Organisation	Days/times (24 hour clock used)	Contact	Contact No
Ballet with Miss Gemma	Saturday 09.00-12.00	Gemma Thomaz	07428 644219
Baby Band	Monday and Friday 9.30-11.30	Charlotte Hill	07789 005477
Badminton	Monday 19.00-20.00	John Riley	07742 034346
Badminton (Men's)	Thursday 20.30-21.30	Tony Carrick	07923 905015
Badminton Rusty Rackets	Tuesday 11.45-12.45	Pam Alford	<a href="mailto:pam.alford@btinternet.com">pam.alford@btinternet.com</a>
Ballroom Babes	Monday 9.15-10.15	James White	<a href="mailto:james@whitediamonddancestudios.co.uk">james@whitediamonddancestudios.co.uk</a>
Be Amazing Drama	For details contact James	James Aconley	<a href="mailto:james@beamazingarts.co.uk">james@beamazingarts.co.uk</a>
Bloom Baby	Friday 9.00-12.00	Fiona Price	07720 966438
Bowls		Colin Robinson	01904 783281
Bridge Club	2nd and 4th Thursday of the month 19.00-22.00	Lesley Holroyd	07840 704379
Dream Time Baby Massage	Tuesday 10.00-11.40 & 12.00- 14.40	Emily Rhowbotham	<a href="mailto:emily.rhowbotham@gmail.com">emily.rhowbotham@gmail.com</a>
Ebor Lacemakers	Monday 10.00-14.00	Hilary Davies	01904 795984
Easy Aerobics	Wednesdays 13.30-14.30	Rachael	07882 076754
Fit4Dance	Wednesday 19.00-20.00	Anna Topott	07801 274699
Football - Veterans	Friday 19.00-20.30	Pete Moss	07525 655116
Keep Fit - Men	Wednesday 20.00-21.00	John Millington	01904 794455
Lisa Marie Performing Arts	Tuesday, Thursday, Saturday	Call for details	07872 508651
Pickleball (all welcome)	Monday 10.30; Tuesday 14.00; Wednesday 11.30 & 17.15 Friday 11.00	Sally Bell-Syer	07792 452675
Pilates - Beginners	Tuesday 10.00 Back Care and 19.45 Mixed Level	Gill Crane	07903 756682
Pilates - Intermediate	Tuesday 11.30 Intermediate	Gill Crane	07903 756682
Perform North	Monday 16.30-20.00	Perfrom North	07802 676655
Pilates with Lucy	Thursday 09.15-10.15	Lucy Ford	07917 891139
Poppleton Arts Society	Monthly, 1st Tuesday, 19.30 Sept-June	Roger Backhouse	<a href="mailto:poppletonarts@gmail.com">poppletonarts@gmail.com</a>
Poppleton History Society	Monthly, 3rd Tuesday	Julian Crabb	01904 798868
Poppleton Literary Society	Wednesday 9.30-12.00	Karl Jarvis	<a href="mailto:karljarvis40@gmail.com">karljarvis40@gmail.com</a>
Poppleton Probus	Alternate Wednesdays 10.00-12.00	Mike Gates	07899 904232
Poppleton Social	For opening hours check their Facebook page	Sam Gallagher	07869 755083
Rhythm Time	Wednesday 12.15-13.30	Tori	Whatsapp 07751 768331
Roche Legal Clinic	3rd Thursday of the month 13.30-16.30	Rachel Roche	01904 866139
Rugby Tots	Tuesday 9.30-11.30	Rob Brining	0345 313 6716
Sing and Sign	Thursday 10.00-12.00	Anne Gibbeson	07811 651720
Stretch and Mobility	Mondays 10.30-12.30	Tish Bolton	07850 156555
Tennis - Membership and Enquiries		John Lister	07800 699897
Tennis - Junior and Adult Classes		Belinda Turnbull	01904 750778
The Little Yorkshire Dance Academy	Wednesday 9.30-10.30; Friday 9.30-11.30	Joanna Harker	<a href="mailto:joanna@thelittleyorkshiredanceacademy.co.uk">joanna@thelittleyorkshiredanceacademy.co.uk</a>
Tumbletots	Thursday 10.00-14.00	Jenny Hampton	07907 711871
Walking Netball	Wednesday 10.00-11.00	Maggie Wilson	07989 256345
YCSG Cardiac Rehab Exercise Class	Monday 13.30-14.30; Friday 13.30-14.30	Ray Schofield	07703 199207
Yoga	Mon 19.30-20.45; Tues 13.15-14.45; Weds 13.45-15.15	Maureen Payne	01904 861564
York Photographic Society	Wednesday 19.00-21.00	Chris Hart	<a href="mailto:chrisjhart@sky.com">chrisjhart@sky.com</a>
York Tuition Centre	Wednesday 15.30-18.30	Rachael Holmes	07968 049406
Zumba Gold	Monday 9.15-10.15	Debs Horsham-Batley	07580 128701



Find out more at [poppletoncentre.org.uk](http://poppletoncentre.org.uk)



Contact Centre Manager 01904 797478 [info@poppletoncentre.org.uk](mailto:info@poppletoncentre.org.uk)

meet | eat | play | relax



# Centrepiece

June issue deadline

1st May 2026

If you would like to **advertise**, have some **interesting news** to share or want to **promote an upcoming event** to the 5,000 residents of Upper and Nether Poppleton in one of our quarterly issues contact **Bob Wood** at [centrepiece@poppletoncentre.org.uk](mailto:centrepiece@poppletoncentre.org.uk) or **Beth Kirkham** at [info@poppletoncentre.org.uk](mailto:info@poppletoncentre.org.uk), 01904 797478



*We're Open as usual*

## POPPLETON SOCIAL IS OPEN!

With exciting renovations going on next door, we're still open and busy serving up our usual coffees, brunch, craft beers & street food - all tucked away in our temporary rooms at the Centre. Come down and enjoy our themed decor, a warm cosy space & some amazing food & drink

BOOK YOUR TABLE AT [WWW.POPPLETONSOCIAL.CO.UK](http://WWW.POPPLETONSOCIAL.CO.UK)

### COMING UP...

Speed Quiz | 21<sup>st</sup> March  
*Tickets available on our website!*

Mother's Day | 15<sup>th</sup> March  
*Book your table now at our website!*

Easter Weekend | 4-5<sup>th</sup> April  
*Book now for the relaunch of our NEW CAFE SPACE!*

Centrepiece is designed and produced by Bob Wood for Poppleton Community Trust (Charity No.1201611), The Poppleton Centre, Main Street, Upper Poppleton, York YO26 6JT. This issue printed by Solopress, Southend-on-Sea, SS2 5QF and distributed free of charge door-to-door throughout Poppleton by our team of dedicated volunteers. It is also available as a PDF at [poppletoncentre.org.uk](http://poppletoncentre.org.uk) as well as being emailed to everyone registered on our ENews database. It is entirely funded by the generosity of our advertisers. © Poppleton Community Trust 2026.



Find out more at [poppletoncentre.org.uk](http://poppletoncentre.org.uk)



Contact Centre Manager 01904 797478 [info@poppletoncentre.org.uk](mailto:info@poppletoncentre.org.uk)

meet | eat | play | relax